

# Learning Experiences

## SUPPLIES

- Availability of supplies
- Unable to locally buy the products we need (tomato hooks, sprays, fertilizers)
- Have supplies on hand



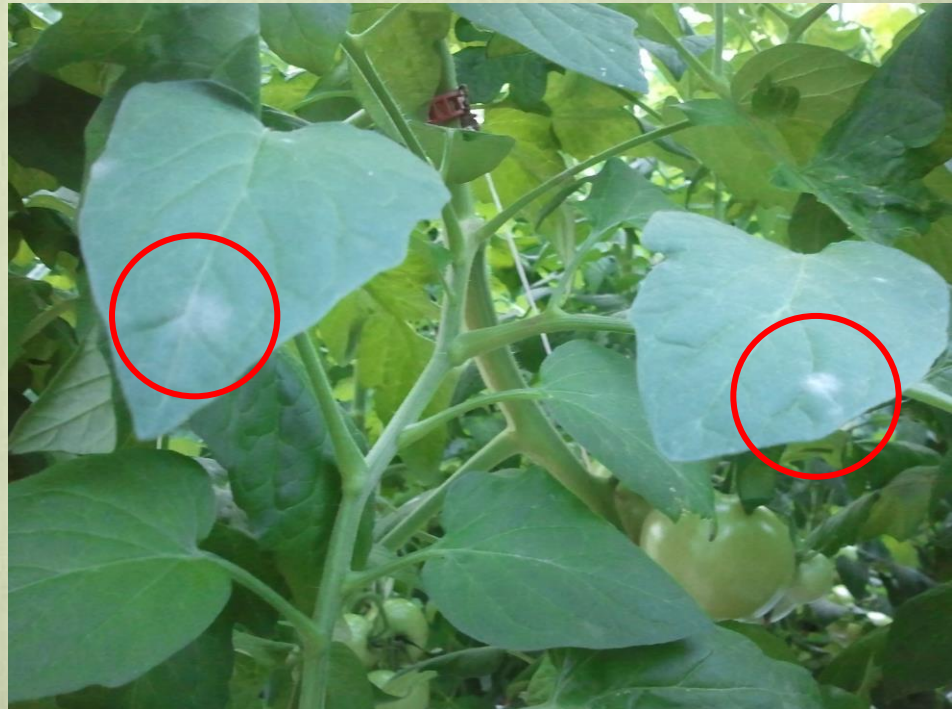
## OTHER LEARNING EXPERIENCES

- Placement of bee hive stands
- Learning the importance of even watering
- Keeping greenhouse sterile (use foot baths)
- Keeping greenhouse free of insects and disease

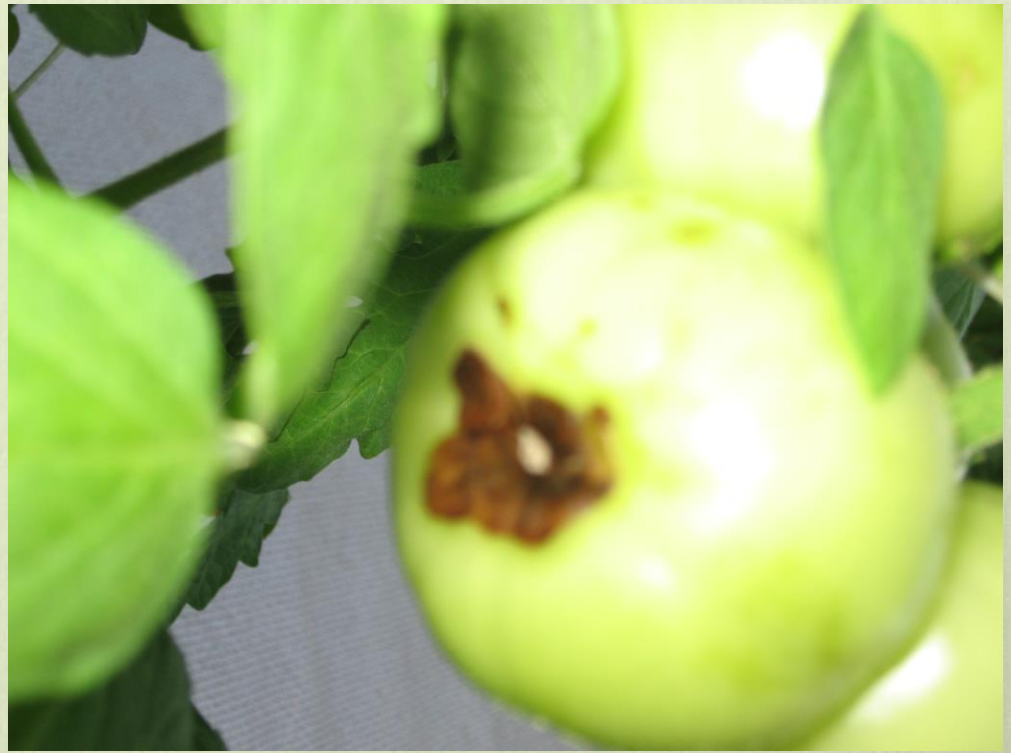


## POWDER MILDEW

- Caused by high humidity
- Need to respond quickly
- Adjust humidity by heating and ventilating properly
- Keeping floors clean and dry
- Use spray if needed



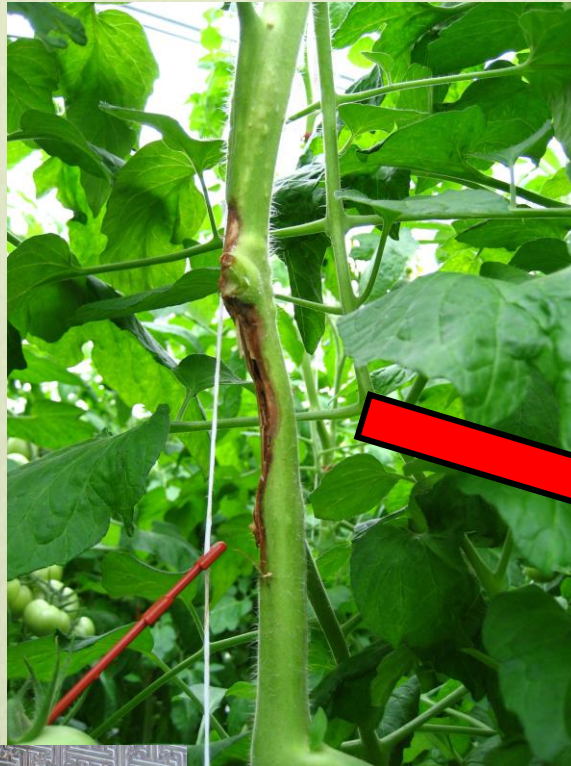
## Nutrient Deficiency



**BLOSSOM END ROT**

# BOTRYTIS

- Can wipe out entire greenhouse quickly
- Needs to be taken care of as soon as it's spotted
- Cut out bad spots with knife and wipe high EC solution on affected spots





## WHITE FLY



# Future Expansion

- Planning on expanding in near future
- Adding 4<sup>th</sup> bay to keep up demand
- Will continue to make our current operation more efficient

